



Certificate of Analysis

Customer:
RJT Farms
155 Shell Dr.
Hardy, VA 24101

Sample ID: **200827002**
Order Number: **CB200827001**
Sample Name: **Space Candy**

Collected Date:
Received Date: **8/27/2020**
COA Released: **8/28/2020**

External Sample ID:
Batch Number: **2020**
Product Type: **Flower**
Sample Type: **Flower**

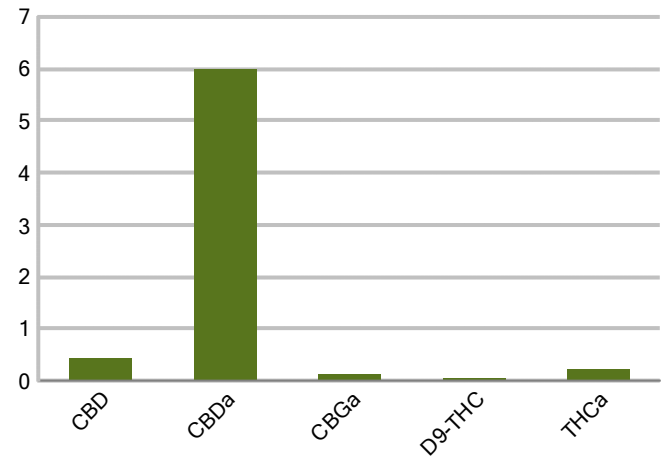
Comments:

CANNABINOID PROFILE

Analyte	LOQ (%)	% weight	mg/g
CBC	0.01	ND	ND
CBD	0.01	0.426	4.259
CBDa	0.01	5.989	59.89
CBDV	0.01	ND	ND
CBG	0.01	ND	ND
CBGa	0.01	0.133	1.326
CBN	0.01	ND	ND
d8-THC	0.01	ND	ND
d9-THC	0.01	0.048	0.478
THCa	0.01	0.220	2.204
Total Cannabinoids		6.816	68.16
Total Potential THC		0.241	2.411
Total Potential CBD		5.678	56.78
Total Potential CBG		0.116	1.164



Cannabinoids (% weight)



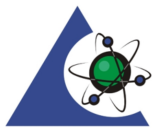
Ratio of Total Potential CBD to Total Potential THC 23.56 : 1

Ratio of Total Potential CBG to Total Potential THC 0.48 : 1

*Total Cannabinoids refers to the sum of all cannabinoids detected.

*Total Potential CBD = (0.877 x CBDa) + CBD. *Total Potential THC = (0.877 x THCa) + THC. *Total Potential CBG = (0.877 x CBGa) + CBG.

*Total Potential THC/CBD are calculated to take into account the loss of an acid group during decarboxylation.



PJLA
Testing
Accreditation #109588

Authorized Signature

Laboratory Manager

Jamie Hobgood

08/28/2020 4:50 PM

DATE

This product has been tested by CannaBusiness Laboratories using validated testing methodologies and a quality system. Values reported relate only to the product tested. CannaBusiness Laboratories makes no claims as to the efficacy, safety, or other risks associated with any detected or non-detected levels of any compounds reported herein. This Certificate shall be reproduced except in full, without the written permission of CannaBusiness Laboratories. Uncertainty information is available on request. Photo is of sample received by the lab and may vary from final packaging. The results apply to the sample as received. ISO/IEC 17025:2017 Accredited.



CannaBusiness Laboratories, LLC

2554 Palumbo Dr. Lexington, KY 40509



Sample ID: 200827002
 Sample Name: Space Candy
 Sample Type: Flower

Certificate of Analysis

Customer

RJT Farms
 155 Shell Dr.
 Hardy, VA 24101



Overall Batch Results

Pesticide N/A	Moisture Content N/A
Potency PASS	Water Activity N/A
Mycotoxins N/A	Heavy Metals N/A
Microbial Screen N/A	Residual Solvents N/A
Terpenoids N/A	

Sample Name: Space Candy

Sample ID: 200827002

Product Type: Flower

Sample Type: Flower

Collected Date:

Received Date: 08/27/2020

Batch Number:

Batch Size:

Sample Size:

COA released:

Potency (mg/g)

Date Tested: 08/27/2020

Method:

Instrument:

0.241 % Total THC	5.678 % Total CBD	6.816 % Total Cannabinoids	68.16 mg/g Total Cannabinoids
-----------------------------	-----------------------------	--------------------------------------	---

Analyte	Result	Units	LOQ	Result	Units
CBC (Cannabichromene)	ND	%	0.010	ND	mg/g
CBD (Cannabidiol)	0.426	%	0.010	4.259	mg/g
CBDa (Cannabidiolic Acid)	5.989	%	0.010	59.89	mg/g
CBDV (Cannabidivarin)	ND	%	0.010	ND	mg/g
CBG (Cannabigerol)	ND	%	0.010	ND	mg/g
CBGa (Cannabigerolic Acid)	0.133	%	0.010	1.326	mg/g
CBN (Cannabinol)	ND	%	0.010	ND	mg/g
D8-THC (D8-Tetrahydrocannabinol)	ND	%	0.010	ND	mg/g
D9-THC (D9-Tetrahydrocannabinol)	0.048	%	0.010	0.478	mg/g
THCa (Tetrahydrocannabinolic Acid)	0.220	%	0.010	2.204	mg/g



Authorized Signature

Laboratory Manager

Jamie Hobgood

08/28/2020 4:50 PM

Date Time

NT = Not tested, ND = Not detected; LOQ = Limit of Quantitation; <LOQ = Detected; >ULOL = Above upper limit of linearity; CFU/g = Colony forming units per 1 gram; TNTC = Too numerous to count

CannaBusiness Laboratories
 License # P-0059: (859)-514- 6999 <https://www.cannabusinesslabs.us>

This product has been tested by CannaBusiness Laboratories using validated testing methodologies and a quality system. Values reported relate only to the product tested. CannaBusiness Laboratories makes no claims as to the efficacy, safety, or other risks associated with any detected or non-detected levels of any compounds reported herein. This Certificate shall not be reproduced except in full, without the written permission of CannaBusiness Laboratories. Uncertainty information is available on request. Photo is of sample received by the lab and may vary from final packaging. The results apply to the sample as received. ISO/IEC 17025:2017 Accredited.