



SPECIAL SAUCE - A - 002929

Sample ID: G0J0472-05

Matrix: Industrial Hemp

Test ID: 5008704

Source ID:

Date Sampled: 10/19/20

Date Accepted: 10/19/20

Organic Green Roots

Results at a Glance

Total THC : 0.5862 %

Total CBD : 14.70 %

Total CBG : 0.4061 %

Total Terpenes : 1.138 % PASS



Eric Wendt
Chief Science Officer - 10/22/2020

All QC samples met acceptance criteria of the method; data available upon request. These results relate only to the sample included on this report. The report may not be reproduced except in full, without the written permission of Green Leaf Lab.

This is for informational testing and is not compliance testing. Lab results apply to the sample as received.



SPECIAL SAUCE - A - 002929

Sample ID: G0J0472-05 Matrix: Industrial Hemp

Test ID: 5008704

Source ID:

Date Sampled: 10/19/20 Date Accepted: 10/19/20

Organic Green Roots

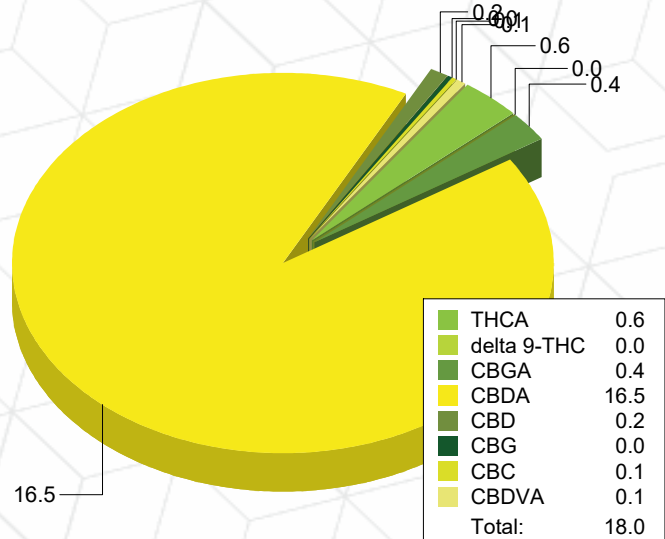
Potency Analysis

Date/Time Extracted: 10/21/20 12:20

Analysis Method/SOP: 215

Batch Identification: 2043037

Cannabinoids	LOQ (%)	% by Wt.	mg/g	Cannabinoids Profile
Total THC	0.009080	0.5862	5.862	
Total CBD	0.008300	14.70	147	
Total CBG	7.900E-4	0.4061	4.061	
THCA	0.002920	0.6464	6.464	
delta 9-THC	0.009080	0.01924	0.1924	
THCV	0.005055	< LOQ	< LOQ	
THCVA	0.001885	< LOQ	< LOQ	
CBD	0.006220	0.2164	2.164	
CBDA	0.008300	16.52	165.2	
CBDV	0.005000	< LOQ	< LOQ	
CBDVA	0.001640	0.07686	0.7686	
CBN	0.002990	< LOQ	< LOQ	
CBG	7.900E-4	0.04707	0.4707	
CBGA	7.900E-4	0.4089	4.089	
CBC	0.008965	0.05430	0.543	



Total THC = delta 9-THC + (THCA * 0.877)

Total CBD = CBD + (CBDA * 0.877)

Total CBG = CBG + (CBGA * 0.878)

LOQ=Limit of Quantification, the lowest measurable concentration of an analyte.



Eric Wendt
Chief Science Officer - 10/22/2020

All QC samples met acceptance criteria of the method; data available upon request. These results relate only to the sample included on this report. The report may not be reproduced except in full, without the written permission of Green Leaf Lab.

This is for informational testing and is not compliance testing. Lab results apply to the sample as received.



SPECIAL SAUCE - A - 002929

Sample ID: G0J0472-05

Matrix: Industrial Hemp

Test ID: 5008704

Source ID:

Date Sampled: 10/19/20

Date Accepted: 10/19/20

Organic Green Roots

Terpene Analysis

Date/Time Extracted: 10/21/20 12:20

Analysis Method/SOP: 204

Monoterpenes	%	mg/g	Monoterpenes	%	mg/g
Camphene	< LOQ	< LOQ	Camphor	< LOQ	< LOQ
3-Carene	< LOQ	< LOQ	alpha-Cedrene	< LOQ	< LOQ
Cedrol	< LOQ	< LOQ	Endo-fenchyl alcohol	0.01521	0.1521
Eucalyptol	< LOQ	< LOQ	Fenchone	< LOQ	< LOQ
Geraniol	< LOQ	< LOQ	Geranyl acetate	< LOQ	< LOQ
Hexahydrothymol	< LOQ	< LOQ	Isoborneol	< LOQ	< LOQ
Isopulegol	< LOQ	< LOQ	Limonene	0.04457	0.4457
Linalool	0.02987	0.2987	p-Mentha-1,5-diene	< LOQ	< LOQ
beta-Myrcene	0.2946	2.946	alpha-Pinene	0.04828	0.4828
beta-Pinene	0.02523	0.2523	Pulegone	< LOQ	< LOQ
Sabinene	< LOQ	< LOQ	Sabinene hydrate	< LOQ	< LOQ
gamma-Terpinene	< LOQ	< LOQ	alpha-Terpinene	< LOQ	< LOQ
Terpineol	0.01462	0.1462	Terpinolene	< LOQ	< LOQ
B Y-Terpineol	< LOQ	< LOQ	Nerol	< LOQ	< LOQ
A-Terpineol	0.02321	0.2321	Borneol	< LOQ	< LOQ
Ocimene isomer II	< LOQ	< LOQ	Ocimene isomer I	< LOQ	< LOQ
Sesquiterpenes	%	mg/g	Sesquiterpenes	%	mg/g
alpha-Bisabolol	0.1759	1.759	beta-Caryophyllene	0.2624	2.624
Caryophyllene Oxide	0.04049	0.4049	Guaiol	0.04778	0.4778
alpha-Humulene	0.1047	1.047	trans-Nerolidol	0.02538	0.2538
Valencene	< LOQ	< LOQ	cis-Nerolidol	< LOQ	< LOQ
Total Terpenes	1.138	11.38			

<LOQ - Results below the Limit of Quantitation - Terpenes profile/analysis are not accredited to ORELAP TNI 2009 Quality Standards.



Eric Wendt
Chief Science Officer - 10/22/2020

All QC samples met acceptance criteria of the method; data available upon request. These results relate only to the sample included on this report. The report may not be reproduced except in full, without the written permission of Green Leaf Lab.

This is for informational testing and is not compliance testing. Lab results apply to the sample as received.



SPECIAL SAUCE - A - 002929

Sample ID: G0J0472-05

Matrix: Industrial Hemp

Test ID: 5008704

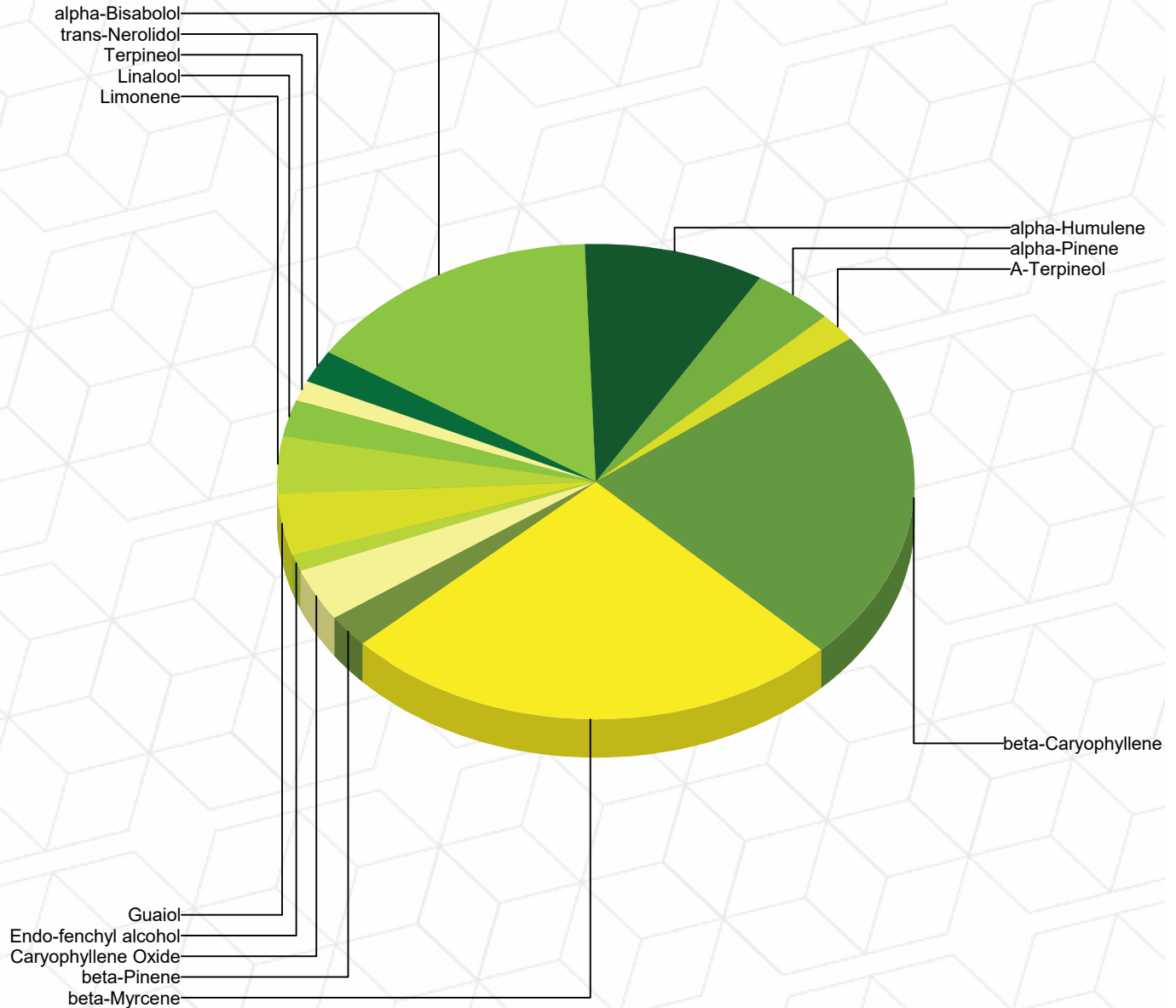
Source ID:

Date Sampled: 10/19/20

Date Accepted: 10/19/20

Organic Green Roots

Terpene Profile



Percentage of Total Terpenes Identified



Eric Wendt
Chief Science Officer - 10/22/2020

All QC samples met acceptance criteria of the method; data available upon request. These results relate only to the sample included on this report. The report may not be reproduced except in full, without the written permission of Green Leaf Lab.

This is for informational testing and is not compliance testing. Lab results apply to the sample as received.



Quality Control Potency

Batch: 2043037 - 215-Hemp

Blank(2043037-BLK1)						
Analyte	Result	LOQ	Units	%Recovery Limits	Extracted	Analyzed
THCA	< LOQ	0.002920	%		10/21/20 12:20	10/21/20 17:58
delta 9-THC	< LOQ	0.009080	%		10/21/20 12:20	10/21/20 17:58
THCV	< LOQ	0.005055	%		10/21/20 12:20	10/21/20 17:58
THCVA	< LOQ	0.001885	%		10/21/20 12:20	10/21/20 17:58
CBD	< LOQ	0.001555	%		10/21/20 12:20	10/21/20 17:58
CBDA	< LOQ	0.002075	%		10/21/20 12:20	10/21/20 17:58
CBDV	< LOQ	0.005000	%		10/21/20 12:20	10/21/20 17:58
CBDVA	< LOQ	0.001640	%		10/21/20 12:20	10/21/20 17:58
CBN	< LOQ	0.002990	%		10/21/20 12:20	10/21/20 17:58
CBG	< LOQ	7.900E-4	%		10/21/20 12:20	10/21/20 17:58
CBGA	< LOQ	7.900E-4	%		10/21/20 12:20	10/21/20 17:58
CBC	< LOQ	0.008965	%		10/21/20 12:20	10/21/20 17:58

Reference(2043037-SRM1)						
Analyte	% Recovery	LOQ	Units	%Recovery Limits	Extracted	Analyzed
THCA	83.2	0.002920	%	80-120	10/21/20 12:20	10/21/20 18:21
delta 9-THC	84.6	0.009080	%	80-120	10/21/20 12:20	10/21/20 18:21
CBD	96.0	0.001555	%	80-120	10/21/20 12:20	10/21/20 18:21
CBDA	89.0	0.002075	%	80-120	10/21/20 12:20	10/21/20 18:21

Terpene Analysis

Batch: 2043037 - 215-Hemp

Blank(2043037-BLK2)						
Analyte	Result	LOQ	Units	%Recovery Limits	Extracted	Analyzed
alpha-Bisabolol	< LOQ	2.500E-4	%		10/21/20 12:20	10/21/20 17:46
Camphene	< LOQ	2.500E-4	%		10/21/20 12:20	10/21/20 17:46
Camphor	< LOQ	2.500E-4	%		10/21/20 12:20	10/21/20 17:46
3-Carene	< LOQ	2.500E-4	%		10/21/20 12:20	10/21/20 17:46
beta-Caryophyllene	< LOQ	2.500E-4	%		10/21/20 12:20	10/21/20 17:46
Caryophyllene Oxide	< LOQ	2.500E-4	%		10/21/20 12:20	10/21/20 17:46
alpha-Cedrene	< LOQ	2.500E-4	%		10/21/20 12:20	10/21/20 17:46
Cedrol	< LOQ	2.500E-4	%		10/21/20 12:20	10/21/20 17:46
Endo-fenchyl alcohol	< LOQ	2.500E-4	%		10/21/20 12:20	10/21/20 17:46
Eucalyptol	< LOQ	2.500E-4	%		10/21/20 12:20	10/21/20 17:46
Fenchone	< LOQ	2.500E-4	%		10/21/20 12:20	10/21/20 17:46
Geraniol	< LOQ	2.500E-4	%		10/21/20 12:20	10/21/20 17:46
Geranyl acetate	< LOQ	2.500E-4	%		10/21/20 12:20	10/21/20 17:46
Guaiol	< LOQ	2.500E-4	%		10/21/20 12:20	10/21/20 17:46
Hexahydrothymol	< LOQ	2.500E-4	%		10/21/20 12:20	10/21/20 17:46



Eric Wendt
Chief Science Officer - 10/22/2020

All QC samples met acceptance criteria of the method; data available upon request. These results relate only to the sample included on this report. The report may not be reproduced except in full, without the written permission of Green Leaf Lab.

This is for informational testing and is not compliance testing. Lab results apply to the sample as received.



Quality Control Terpene Analysis (Continued)

Batch: 2043037 - 215-Hemp (Continued)

Blank(2043037-BLK2)						
Analyte	Result	LOQ	Units	%Recovery Limits	Extracted	Analyzed
alpha-Humulene	< LOQ	2.500E-4	%		10/21/20 12:20	10/21/20 17:46
Isoborneol	< LOQ	2.500E-4	%		10/21/20 12:20	10/21/20 17:46
Isopulegol	< LOQ	2.500E-4	%		10/21/20 12:20	10/21/20 17:46
Limonene	< LOQ	2.500E-4	%		10/21/20 12:20	10/21/20 17:46
Linalool	< LOQ	2.500E-4	%		10/21/20 12:20	10/21/20 17:46
p-Mentha-1,5-diene	< LOQ	2.500E-4	%		10/21/20 12:20	10/21/20 17:46
beta-Myrcene	< LOQ	2.500E-4	%		10/21/20 12:20	10/21/20 17:46
trans-Nerolidol	< LOQ	2.500E-4	%		10/21/20 12:20	10/21/20 17:46
alpha-Pinene	< LOQ	2.500E-4	%		10/21/20 12:20	10/21/20 17:46
beta-Pinene	< LOQ	2.500E-4	%		10/21/20 12:20	10/21/20 17:46
Pulegone	< LOQ	2.500E-4	%		10/21/20 12:20	10/21/20 17:46
Sabinene	< LOQ	2.500E-4	%		10/21/20 12:20	10/21/20 17:46
Sabinene hydrate	< LOQ	2.500E-4	%		10/21/20 12:20	10/21/20 17:46
gamma-Terpinene	< LOQ	2.500E-4	%		10/21/20 12:20	10/21/20 17:46
alpha-Terpinene	< LOQ	2.500E-4	%		10/21/20 12:20	10/21/20 17:46
Terpineol	< LOQ	2.500E-4	%		10/21/20 12:20	10/21/20 17:46
Terpinolene	< LOQ	2.500E-4	%		10/21/20 12:20	10/21/20 17:46
Valencene	< LOQ	2.500E-4	%		10/21/20 12:20	10/21/20 17:46
B Y-Terpineol	< LOQ	2.500E-4	%		10/21/20 12:20	10/21/20 17:46
Nerol	< LOQ	2.500E-4	%		10/21/20 12:20	10/21/20 17:46
A-Terpineol	< LOQ	2.500E-4	%		10/21/20 12:20	10/21/20 17:46
cis-Nerolidol	< LOQ	2.500E-4	%		10/21/20 12:20	10/21/20 17:46
Borneol	< LOQ	2.500E-4	%		10/21/20 12:20	10/21/20 17:46
Ocimene isomer II	< LOQ	2.500E-4	%		10/21/20 12:20	10/21/20 17:46
Ocimene isomer I	< LOQ	2.500E-4	%		10/21/20 12:20	10/21/20 17:46

Reference(2043037-SRM2)						
Analyte	% Recovery	LOQ	Units	%Recovery Limits	Extracted	Analyzed
beta-Caryophyllene	68.8	2.500E-4	%	70-130	10/21/20 12:20	10/21/20 18:04
alpha-Humulene	84.7	2.500E-4	%	70-130	10/21/20 12:20	10/21/20 18:04
beta-Myrcene	26.1	2.500E-4	%	70-130	10/21/20 12:20	10/21/20 18:04



Eric Wendt
Chief Science Officer - 10/22/2020

All QC samples met acceptance criteria of the method; data available upon request. These results relate only to the sample included on this report. The report may not be reproduced except in full, without the written permission of Green Leaf Lab.

This is for informational testing and is not compliance testing. Lab results apply to the sample as received.