



### GRAND - SR - 0041010

Sample ID: G0J0472-04

Matrix: Industrial Hemp

Test ID: 5008703

Source ID:

Date Sampled: 10/19/20

Date Accepted: 10/19/20

*Organic Green Roots*

### Results at a Glance

Total THC : 0.5781 %

Total CBD : 15.31 %

Total CBG : 0.3667 %

Total Terpenes : 2.065 % PASS



Eric Wendt  
Chief Science Officer - 10/22/2020

All QC samples met acceptance criteria of the method; data available upon request. These results relate only to the sample included on this report. The report may not be reproduced except in full, without the written permission of Green Leaf Lab.

This is for informational testing and is not compliance testing. Lab results apply to the sample as received.



### GRAND - SR - 0041010

Sample ID: G0J0472-04

Matrix: Industrial Hemp

Test ID: 5008703

Source ID:

Date Sampled: 10/19/20

Date Accepted: 10/19/20

Organic Green Roots

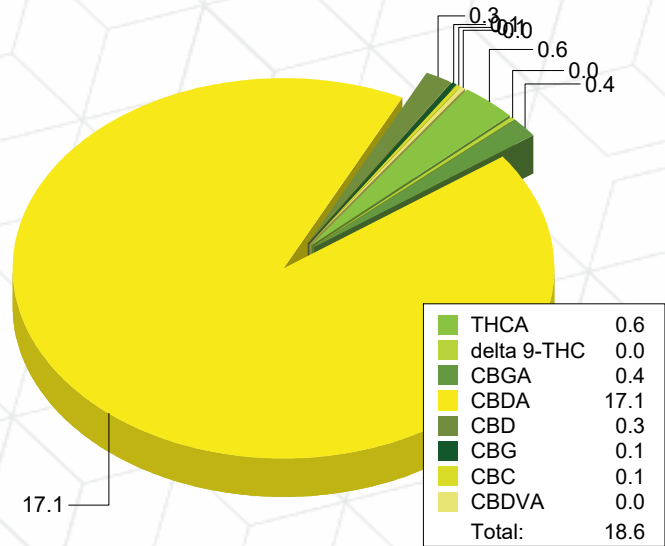
### Potency Analysis

Date/Time Extracted: 10/21/20 12:20

Analysis Method/SOP: 215

Batch Identification: 2043037

Cannabinoids	LOQ (%)	% by Wt.	mg/g	Cannabinoids Profile
Total THC	0.009080	0.5781	5.781	
Total CBD	0.008300	15.31	153.1	
Total CBG	7.900E-4	0.3667	3.667	
THCA	0.002920	0.6191	6.191	
delta 9-THC	0.009080	0.03518	0.3518	
THCV	0.005055	< LOQ	< LOQ	
THCVA	0.001885	< LOQ	< LOQ	
CBD	0.006220	0.3080	3.08	
CBDA	0.008300	17.10	171	
CBDV	0.005000	< LOQ	< LOQ	
CBDVA	0.001640	0.04632	0.4632	
CBN	0.002990	< LOQ	< LOQ	
CBG	7.900E-4	0.05838	0.5838	
CBGA	7.900E-4	0.3512	3.512	
CBC	0.008965	0.06356	0.6356	



Total THC = delta 9-THC + (THCA \* 0.877)

Total CBD = CBD + (CBDA \* 0.877)

Total CBG = CBG + (CBGA \* 0.878)

LOQ=Limit of Quantification, the lowest measurable concentration of an analyte.



ISO 17025  
ACCREDITED  
LABORATORY

Eric Wendt  
Chief Science Officer - 10/22/2020

All QC samples met acceptance criteria of the method; data available upon request. These results relate only to the sample included on this report. The report may not be reproduced except in full, without the written permission of Green Leaf Lab.

This is for informational testing and is not compliance testing. Lab results apply to the sample as received.



### GRAND - SR - 0041010

Sample ID: G0J0472-04

Matrix: Industrial Hemp

Test ID: 5008703

Source ID:

Date Sampled: 10/19/20

Date Accepted: 10/19/20

### Organic Green Roots

### Terpene Analysis

Date/Time Extracted: 10/21/20 12:20

Analysis Method/SOP: 204

Monoterpenes	%	mg/g	Monoterpenes	%	mg/g
Camphene	< LOQ	< LOQ	Camphor	< LOQ	< LOQ
3-Carene	< LOQ	< LOQ	alpha-Cedrene	< LOQ	< LOQ
Cedrol	< LOQ	< LOQ	Endo-fenchyl alcohol	0.01806	0.1806
Eucalyptol	< LOQ	< LOQ	Fenchone	< LOQ	< LOQ
Geraniol	< LOQ	< LOQ	Geranyl acetate	< LOQ	< LOQ
Hexahydrothymol	< LOQ	< LOQ	Isoborneol	< LOQ	< LOQ
Isopulegol	< LOQ	< LOQ	Limonene	0.1074	1.074
Linalool	< LOQ	< LOQ	p-Mentha-1,5-diene	< LOQ	< LOQ
beta-Myrcene	0.7412	7.412	alpha-Pinene	0.1163	1.163
beta-Pinene	0.05623	0.5623	Pulegone	< LOQ	< LOQ
Sabinene	< LOQ	< LOQ	Sabinene hydrate	< LOQ	< LOQ
gamma-Terpinene	< LOQ	< LOQ	alpha-Terpinene	< LOQ	< LOQ
Terpineol	0.01748	0.1748	Terpinolene	< LOQ	< LOQ
B Y-Terpineol	< LOQ	< LOQ	Nerol	< LOQ	< LOQ
A-Terpineol	0.02775	0.2775	Borneol	< LOQ	< LOQ
Ocimene isomer II	< LOQ	< LOQ	Ocimene isomer I	< LOQ	< LOQ
Sesquiterpenes	%	mg/g	Sesquiterpenes	%	mg/g
alpha-Bisabolol	0.2396	2.396	beta-Caryophyllene	0.5229	5.229
Caryophyllene Oxide	0.02985	0.2985	Guaiol	< LOQ	< LOQ
alpha-Humulene	0.1706	1.706	trans-Nerolidol	0.03547	0.3547
Valencene	< LOQ	< LOQ	cis-Nerolidol	< LOQ	< LOQ
<b>Total Terpenes</b>	<b>2.065</b>	<b>20.65</b>			

<LOQ - Results below the Limit of Quantitation - Terpenes profile/analysis are not accredited to ORELAP TNI 2009 Quality Standards.



Eric Wendt  
Chief Science Officer - 10/22/2020

All QC samples met acceptance criteria of the method; data available upon request. These results relate only to the sample included on this report. The report may not be reproduced except in full, without the written permission of Green Leaf Lab.

This is for informational testing and is not compliance testing. Lab results apply to the sample as received.



### GRAND - SR - 0041010

Sample ID: G0J0472-04

Matrix: Industrial Hemp

Test ID: 5008703

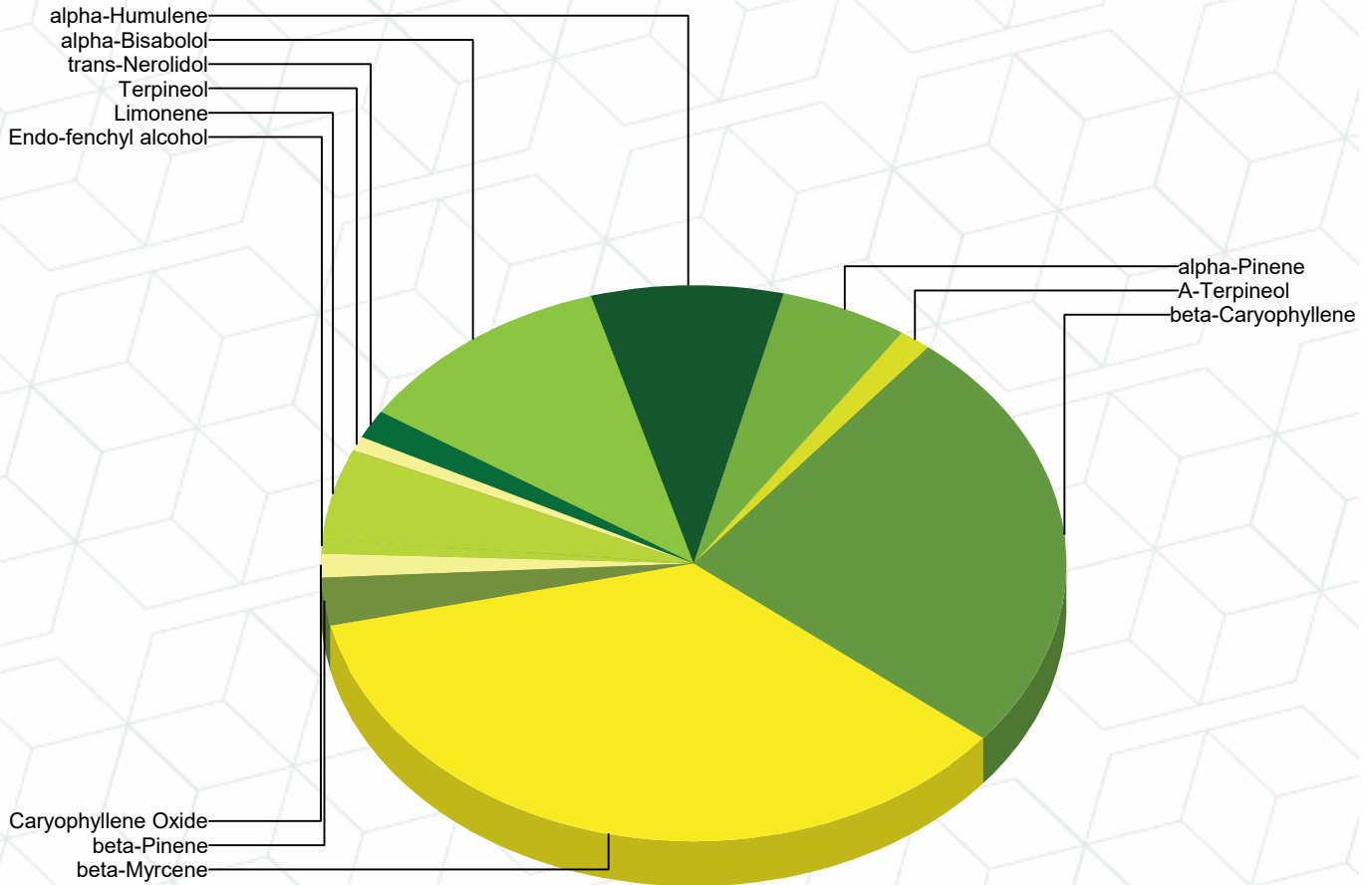
Source ID:

Date Sampled: 10/19/20

Date Accepted: 10/19/20

Organic Green Roots

### Terpene Profile



### Percentage of Total Terpenes Identified



Eric Wendt  
Chief Science Officer - 10/22/2020

All QC samples met acceptance criteria of the method; data available upon request. These results relate only to the sample included on this report. The report may not be reproduced except in full, without the written permission of Green Leaf Lab.

This is for informational testing and is not compliance testing. Lab results apply to the sample as received.



### Quality Control Potency

Batch: 2043037 - 215-Hemp

Blank(2043037-BLK1)						
Analyte	Result	LOQ	Units	%Recovery Limits	Extracted	Analyzed
THCA	< LOQ	0.002920	%		10/21/20 12:20	10/21/20 17:58
delta 9-THC	< LOQ	0.009080	%		10/21/20 12:20	10/21/20 17:58
THCV	< LOQ	0.005055	%		10/21/20 12:20	10/21/20 17:58
THCVA	< LOQ	0.001885	%		10/21/20 12:20	10/21/20 17:58
CBD	< LOQ	0.001555	%		10/21/20 12:20	10/21/20 17:58
CBDA	< LOQ	0.002075	%		10/21/20 12:20	10/21/20 17:58
CBDV	< LOQ	0.005000	%		10/21/20 12:20	10/21/20 17:58
CBDVA	< LOQ	0.001640	%		10/21/20 12:20	10/21/20 17:58
CBN	< LOQ	0.002990	%		10/21/20 12:20	10/21/20 17:58
CBG	< LOQ	7.900E-4	%		10/21/20 12:20	10/21/20 17:58
CBGA	< LOQ	7.900E-4	%		10/21/20 12:20	10/21/20 17:58
CBC	< LOQ	0.008965	%		10/21/20 12:20	10/21/20 17:58

Reference(2043037-SRM1)						
Analyte	% Recovery	LOQ	Units	%Recovery Limits	Extracted	Analyzed
THCA	83.2	0.002920	%	80-120	10/21/20 12:20	10/21/20 18:21
delta 9-THC	84.6	0.009080	%	80-120	10/21/20 12:20	10/21/20 18:21
CBD	96.0	0.001555	%	80-120	10/21/20 12:20	10/21/20 18:21
CBDA	89.0	0.002075	%	80-120	10/21/20 12:20	10/21/20 18:21

### Terpene Analysis

Batch: 2043037 - 215-Hemp

Blank(2043037-BLK2)						
Analyte	Result	LOQ	Units	%Recovery Limits	Extracted	Analyzed
alpha-Bisabolol	< LOQ	2.500E-4	%		10/21/20 12:20	10/21/20 17:46
Camphene	< LOQ	2.500E-4	%		10/21/20 12:20	10/21/20 17:46
Camphor	< LOQ	2.500E-4	%		10/21/20 12:20	10/21/20 17:46
3-Carene	< LOQ	2.500E-4	%		10/21/20 12:20	10/21/20 17:46
beta-Caryophyllene	< LOQ	2.500E-4	%		10/21/20 12:20	10/21/20 17:46
Caryophyllene Oxide	< LOQ	2.500E-4	%		10/21/20 12:20	10/21/20 17:46
alpha-Cedrene	< LOQ	2.500E-4	%		10/21/20 12:20	10/21/20 17:46
Cedrol	< LOQ	2.500E-4	%		10/21/20 12:20	10/21/20 17:46
Endo-fenchyl alcohol	< LOQ	2.500E-4	%		10/21/20 12:20	10/21/20 17:46
Eucalyptol	< LOQ	2.500E-4	%		10/21/20 12:20	10/21/20 17:46
Fenchone	< LOQ	2.500E-4	%		10/21/20 12:20	10/21/20 17:46
Geraniol	< LOQ	2.500E-4	%		10/21/20 12:20	10/21/20 17:46
Geranyl acetate	< LOQ	2.500E-4	%		10/21/20 12:20	10/21/20 17:46
Guaiol	< LOQ	2.500E-4	%		10/21/20 12:20	10/21/20 17:46
Hexahydrothymol	< LOQ	2.500E-4	%		10/21/20 12:20	10/21/20 17:46



Eric Wendt  
Chief Science Officer - 10/22/2020

All QC samples met acceptance criteria of the method; data available upon request. These results relate only to the sample included on this report. The report may not be reproduced except in full, without the written permission of Green Leaf Lab.

This is for informational testing and is not compliance testing. Lab results apply to the sample as received.



### Quality Control Terpene Analysis (Continued)

Batch: 2043037 - 215-Hemp (Continued)

Blank(2043037-BLK2)						
Analyte	Result	LOQ	Units	%Recovery Limits	Extracted	Analyzed
alpha-Humulene	< LOQ	2.500E-4	%		10/21/20 12:20	10/21/20 17:46
Isoborneol	< LOQ	2.500E-4	%		10/21/20 12:20	10/21/20 17:46
Isopulegol	< LOQ	2.500E-4	%		10/21/20 12:20	10/21/20 17:46
Limonene	< LOQ	2.500E-4	%		10/21/20 12:20	10/21/20 17:46
Linalool	< LOQ	2.500E-4	%		10/21/20 12:20	10/21/20 17:46
p-Mentha-1,5-diene	< LOQ	2.500E-4	%		10/21/20 12:20	10/21/20 17:46
beta-Myrcene	< LOQ	2.500E-4	%		10/21/20 12:20	10/21/20 17:46
trans-Nerolidol	< LOQ	2.500E-4	%		10/21/20 12:20	10/21/20 17:46
alpha-Pinene	< LOQ	2.500E-4	%		10/21/20 12:20	10/21/20 17:46
beta-Pinene	< LOQ	2.500E-4	%		10/21/20 12:20	10/21/20 17:46
Pulegone	< LOQ	2.500E-4	%		10/21/20 12:20	10/21/20 17:46
Sabinene	< LOQ	2.500E-4	%		10/21/20 12:20	10/21/20 17:46
Sabinene hydrate	< LOQ	2.500E-4	%		10/21/20 12:20	10/21/20 17:46
gamma-Terpinene	< LOQ	2.500E-4	%		10/21/20 12:20	10/21/20 17:46
alpha-Terpinene	< LOQ	2.500E-4	%		10/21/20 12:20	10/21/20 17:46
Terpineol	< LOQ	2.500E-4	%		10/21/20 12:20	10/21/20 17:46
Terpinolene	< LOQ	2.500E-4	%		10/21/20 12:20	10/21/20 17:46
Valencene	< LOQ	2.500E-4	%		10/21/20 12:20	10/21/20 17:46
B Y-Terpineol	< LOQ	2.500E-4	%		10/21/20 12:20	10/21/20 17:46
Nerol	< LOQ	2.500E-4	%		10/21/20 12:20	10/21/20 17:46
A-Terpineol	< LOQ	2.500E-4	%		10/21/20 12:20	10/21/20 17:46
cis-Nerolidol	< LOQ	2.500E-4	%		10/21/20 12:20	10/21/20 17:46
Borneol	< LOQ	2.500E-4	%		10/21/20 12:20	10/21/20 17:46
Ocimene isomer II	< LOQ	2.500E-4	%		10/21/20 12:20	10/21/20 17:46
Ocimene isomer I	< LOQ	2.500E-4	%		10/21/20 12:20	10/21/20 17:46

Reference(2043037-SRM2)						
Analyte	% Recovery	LOQ	Units	%Recovery Limits	Extracted	Analyzed
beta-Caryophyllene	68.8	2.500E-4	%	70-130	10/21/20 12:20	10/21/20 18:04
alpha-Humulene	84.7	2.500E-4	%	70-130	10/21/20 12:20	10/21/20 18:04
beta-Myrcene	26.1	2.500E-4	%	70-130	10/21/20 12:20	10/21/20 18:04



Eric Wendt  
Chief Science Officer - 10/22/2020

All QC samples met acceptance criteria of the method; data available upon request. These results relate only to the sample included on this report. The report may not be reproduced except in full, without the written permission of Green Leaf Lab.

This is for informational testing and is not compliance testing. Lab results apply to the sample as received.